

Artisan Loom

Type De Produit	Moquette EN Lé	
Collection	Design Journey	
Numéro Du Style	5A208	
Construction	Tufté Bouclé Rasé Structuré à Motif	
Fibre	Ecosolution Q® Nylon	
Sous-couche Primaire	Synthétique	
Sous-couche Secondaire	Ultraloc®	
Traitements Protecteurs	SSP® Shaw Protection Du Sol	
Adhésif Recommandé	H1000, H1200 or H3800	
	u.s.	metric
Dimensions Du Produit	12 ft	3.66 m
Jauge	1/10 in	39.4 per 10 cm
Points	9.5 per in	38.0 per 10 cm
Densité Moyenne	9060 oz/yd³	0.335 g/cm³
Kilotex		9.04
Epaisseur Du Velours	0.335 in	8.51 mm
Poids Tufté	38 oz/yd²	1288.4 g/m²
Installation Répétition Du Motif	48 in x 36 in	121.92 cm x 91.44 cm

Méthodes d'Installation Conseillées

Direct Glue, Double Glue, Stretch-In

Données + Tests Et Essai

Test d'Inflammabilité	Pass
Panneau Rayonnant (Astm E648)	Class I
Nbs Smoke	Less Than 450
Propension Électrostatique	Less Than 3.5 kv
Label Cri Green Label Plus (Glp)	GLP2271
Ada Compliance	>0.6, Meets the recommended static coefficient of friction for ADA walking surfaces and accessible routes***

Test Reports may be included or listed by the manufacturing/inventory style number as opposed to the noted selling style number.

Garanties

Durée De Vie Commerciale Limitée

Coordination Des Produits

Carpet Tile: **Artisan Tile, Plain Weave Tile, Chok Tile**
Broadloom: **Chok Loom**

Attributs + Certifications

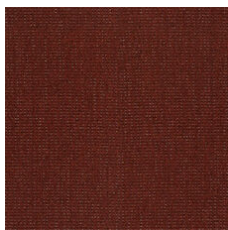
Certification Cradle to Cradle™ (C2C)	Silver Level (Version 3.1)
Déclaration environnementale de produit (EPD)	Certifié Par Un Organisme Tiers Conformément Aux Normes ISO14044, ISO 14025 & EN15804
NSF 140	or
CRI Green Label Plus (GLP)	GLP2271
Label CE (EN 14041)	Certifié Par Un Organisme Tiers
garantie environnementale	Re[turn] Reclamation Program* Pickup & Delivery Available
contenu recyclé total	<1% (Pre-Consumer <1% Post-Consumer 0%)
emballage du produit	100% Recyclable
pays d'origine	USA

Contribution À La Certification Leed

MR Credit: Building Product Disclosure and Optimisation Environmental Product Declarations - Option 1: Environmental Product Declaration (EPD)	3rd Party Certified in Accordance with ISO14044, ISO14025 & EN15804
MR Credit: Building Product Disclosure and Optimisation Material Ingredients - Option 1: Material Ingredient Reporting	C2C Silver Level (Version 3.1)
MR Credit: Building Product Disclosure and Optimisation Material Ingredients - Option 2: Material Ingredient Optimization	C2C Silver Level (Version 3.1)
"Crédit EQ : matériaux faibles émissions Option 1 : calculs par catégorie de produit"	Certified

Available Colorways

					
Natural Silk 96111	Heddle 96156	Pidan 96314	Tradition 96496	Angkor 96500	Naga 96504
					
Pagoda 96515	Handcraft 96555	Bayon 96585	Copper 96601	Temple 96713	Kadai 96760



Annato 96880



Sanskrit 96906

Informations Supplémentaires

* To learn more about the recyclability of our products and our Environmental Guarantee, please visit shawcontract.com/sustainability.

**Meets or exceeds all local and national regulations in country of manufacture. (Manufactured in an ISO 9001 & ISO 14001 certified facility or equivalent)

***This carpet is manufactured to be ADA compliant, but to be fully ADA compliant, the end-user must ensure the carpet is adhered to the floor and installed as outlined in the ADA standards.

[Installation Guidelines](#)

[Maintenance Guidelines](#)

Specifications are subject to nominal manufacturing variance. Material supply and/or manufacturing processes may necessitate changes without notice.

This product is an exclusive design and may not be duplicated in any manner. Use of this design in the creation of another product design is also strictly prohibited.

Visit shawcontract.com/testing for more information.



PVC-Free

Corporate Headquarters +1 800 257 7429 | +1 706 532 7984 | Atlanta +1 404 853 7429 | Bengaluru +91 80 6773 0202 | Beijing +86 10 6568 588 | Chicago +1 312 467 1331 | Dubai +971 4 584 6956 | Hong Kong +852 2623 0371 | Latin America (Miami) +1 305 827 5912 | London +44 207 961 4120 | Los Angeles +1 800 233 1614 | Melbourne +61 3 9939 8543 | Mexico City +55 5010 7600 | Mumbai +91 22 6284 5050 | Nantong +86 400 800 7429 | New York +1 212 953 7429 | Paris +33 (0) 1 81 22 44 39 | San Francisco +1 415 955 1920 | Santiago +562 2431 5000 x 550 | São Paulo +55 11 3071 1702 | Shanghai +86 21 3338 4000 | Singapore +65 6733 1811 | Sydney +1 800 556 302